



City of Mobile
Mobile County

GREEN TEAM

2021

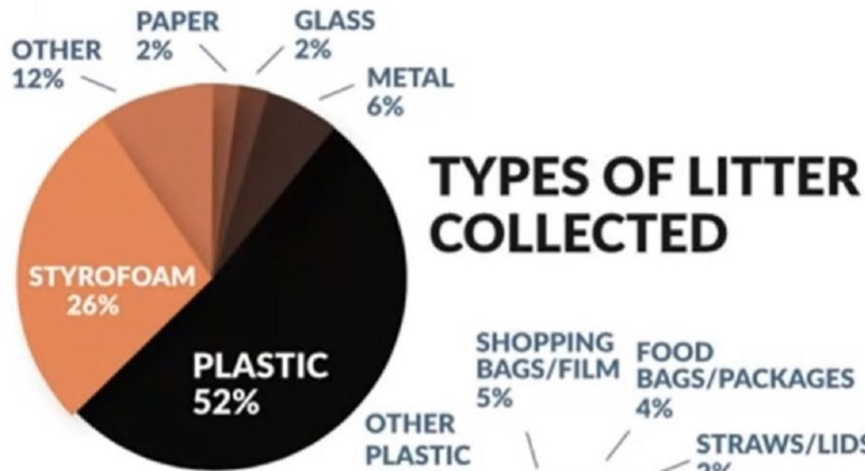
Mission: Develop a product for key decision makers that facilitates the development of policy/ordinances for the reduction of the usage of single use plastics and plastic foam by the City of Mobile and County.

Vision: Serve as example for good environmental stewardship by reducing single usage plastic and plastic foam.

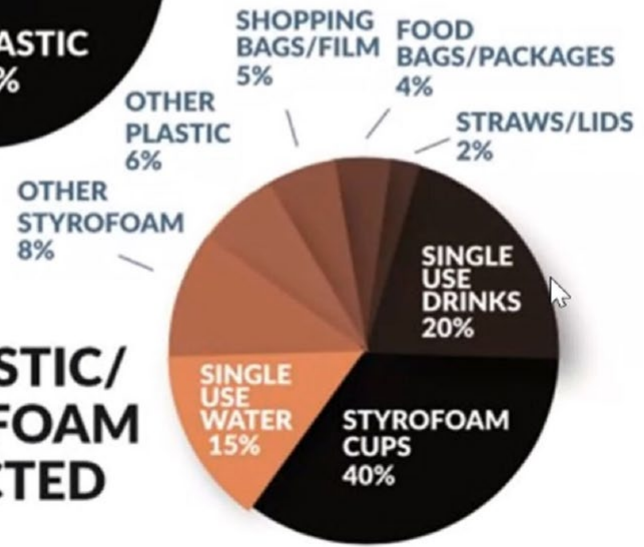
Survey: The Green Team developed and distributed the survey on the behaviors and usage of single use plastic to the City of Mobile's Departments and selected County Offices. The survey gathered information from 15 City Departments and 9 County Offices



Data Collection



TYPES OF PLASTIC/STYROFOAM COLLECTED



What Types of Single Use Plastic/Styrofoam are Being is Collected in Our Environment?

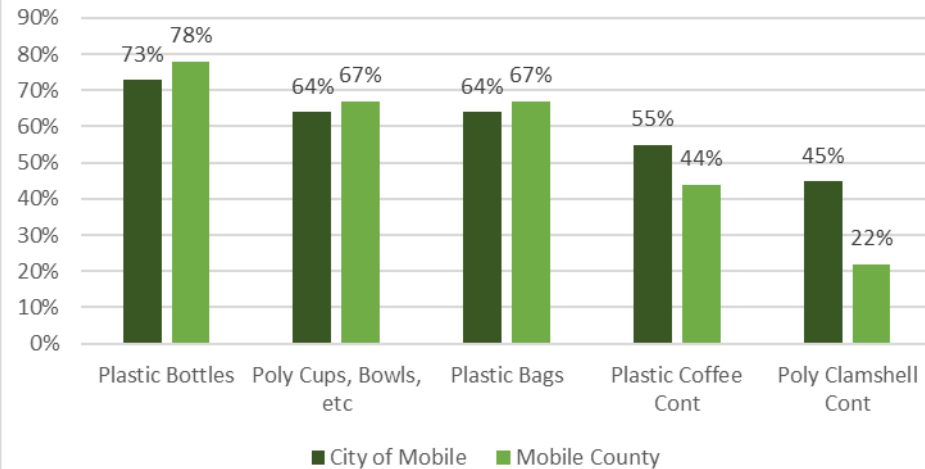


Commonly Used Plastics

- Plastic Water and Soda Bottles
- Polystyrene/Foam Cups, Bowls, Plates, etc.
- Plastic Bags or Trash Bags
- Plastic Ground Coffee Containers
- Polystyrene Clamshell Food Containers



Work Place Plastic Usage and Type



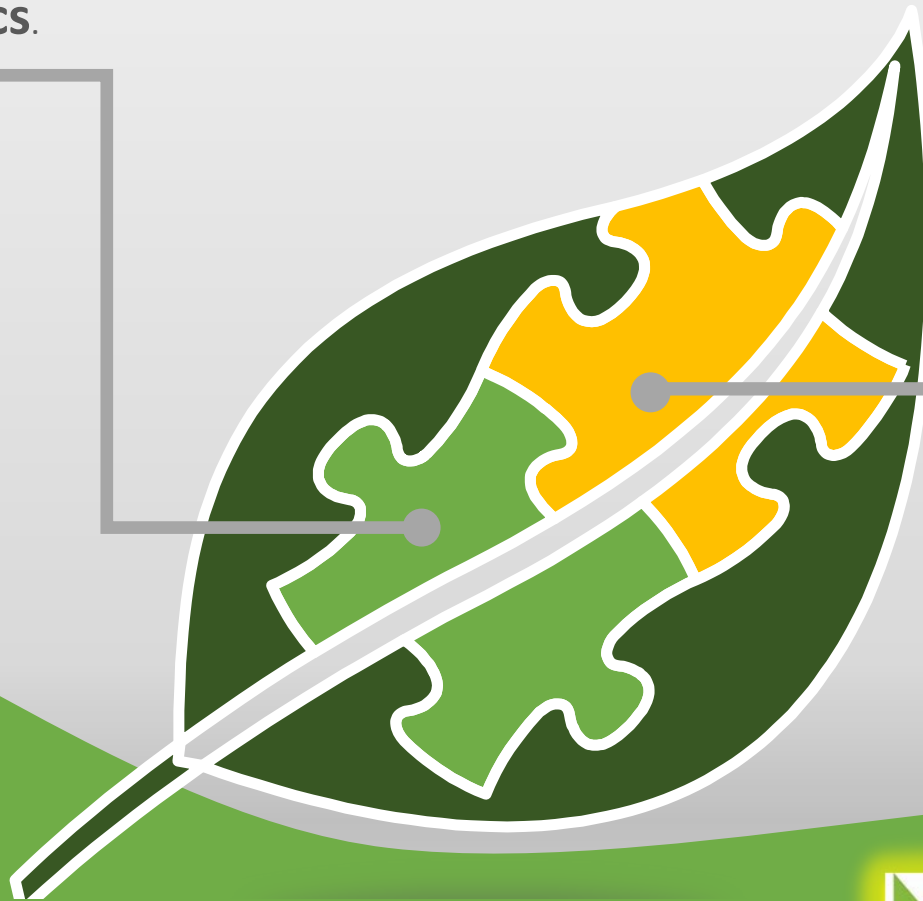
Recommendations

1. Encourage employees to bring reusable utensils, plates, and mugs from home for personal use i.e., stainless steel, bamboo, ceramic, glass, wood, or other environmentally friendly materials.
2. Encourage or distribute stainless steel promotional sports water bottles.
3. County should replace all drinking fountains with accessible chilled-filtered fountains with water bottle refill stations.
4. Encourage recycling and place recycling bins in break rooms and elevator lobbies.
5. For serving visitors, utilize reusable plates, utensils, mugs and water glasses.
6. Educate and promote cost effective and convenient environmentally friendly alternatives for vendors and employees.
7. Enact policies to increase the use of recycled material/products.
8. Install dishwashers or sinks for cleaning reusable items.
9. Research successful best practices and develop recommendations for City Council and County Commission.



Commonly Used
Plastics.

Other
Concentrations
of Single Use
Plastics



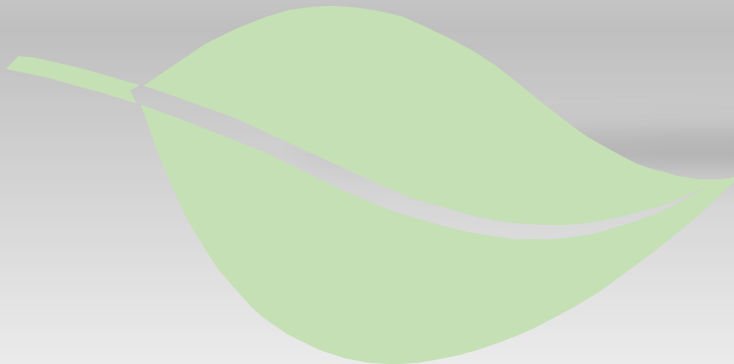
45% of City departments do hold celebrations. It is usually to gather and socialize during the holidays and for employee appreciation/career highlights during breakfast or lunch. Majority of these celebrations require employees to use plastic utensils, bowls, plates, and cups.





Recommendations

1. Encourage employees to bring reusable utensils from home.
2. Encourage or distribute stainless steel promotional sports bottles.
3. County should replace all drinking fountains with accessible chilled-filtered fountains with water bottle refill stations.
4. Encourage recycling and place recycling bins in elevator lobbies.
5. Encourage the use of reusable shopping bags to carry items and provide containers for plastic bag recycling.



**Commonly Used
Plastics**

**Single Use Plastics
At
Public Events
Concession Stands**

**Other
Concentrations
of Single Use
Plastics**

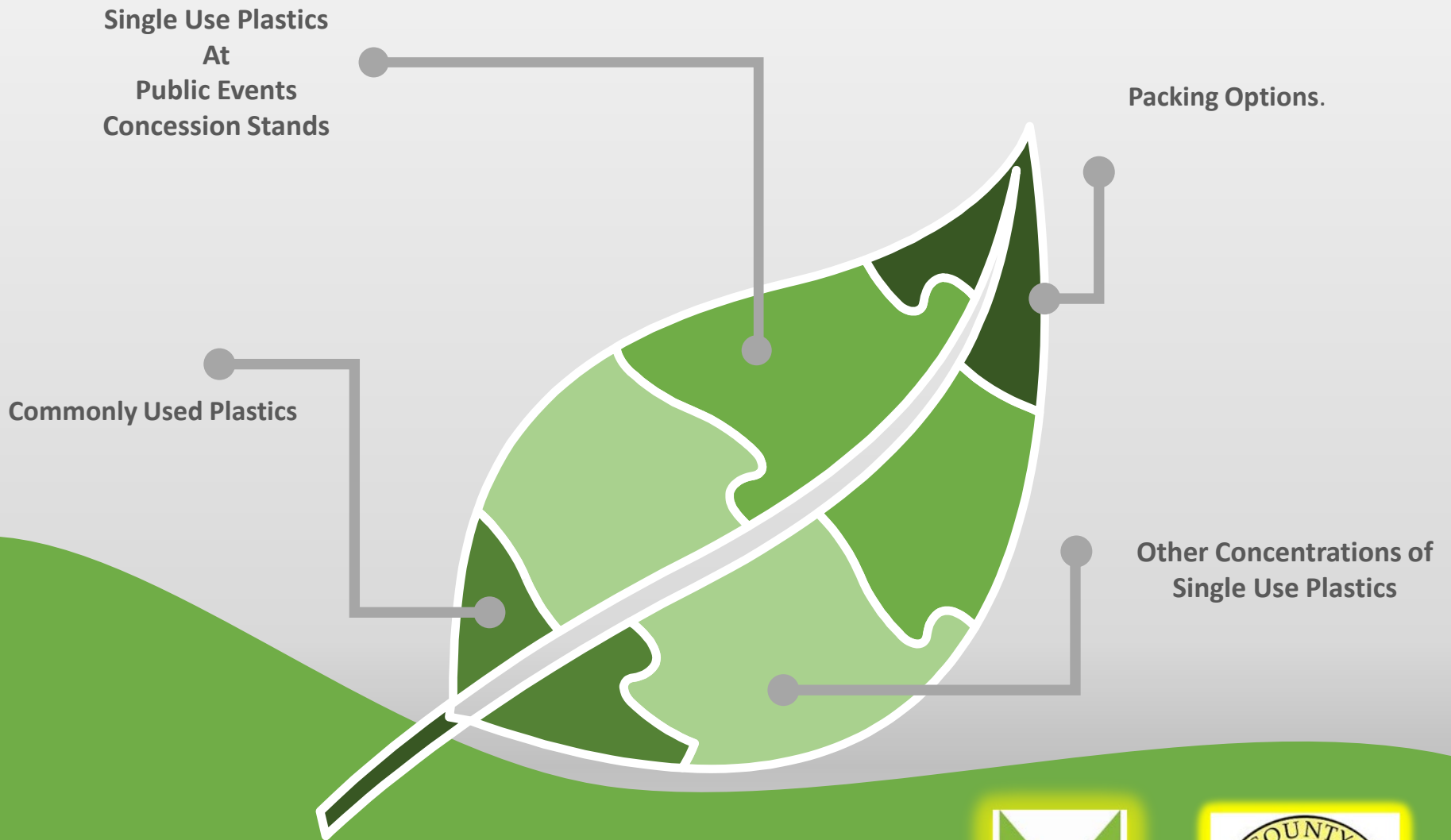
No city department or county office reported that they operate a concession stand, and 73% of city departments reported that they do not engage in sponsoring public events. The Departments and county offices that do engage in public events report the utilization of plastic water bottles, Styrofoam cups for coffee, and plastic stir sticks. These items are usually purchased by the individual employee or from an external source (restaurant/food establishments).



Recommendations

1. Replace Styrofoam cups and plastic coffee stir sticks with paper or other environmentally friendly items.
2. Encourage recycling of plastic bottles and aluminum cans and place recycling bins at events.
4. Encourage and educate purchasers on environmentally friendly alternatives.
5. Establish a designated/special fund for plastic/foam reducing purchases.
6. Utilize vendors that can provide reusable items or environmentally friendly disposable items.





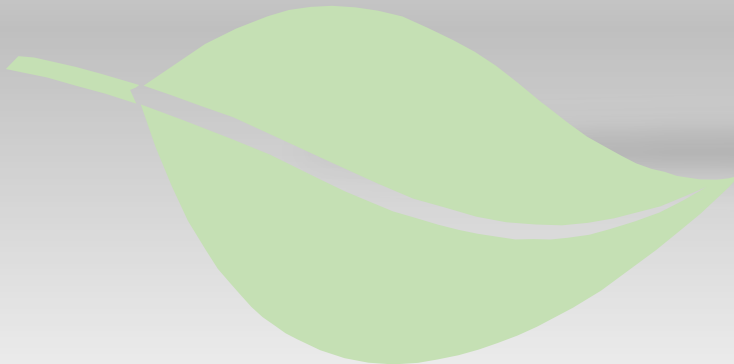
City and County employees responded with the suggestions of re-using boxes or substituting other materials for foam/plastic, i.e., paper bags.

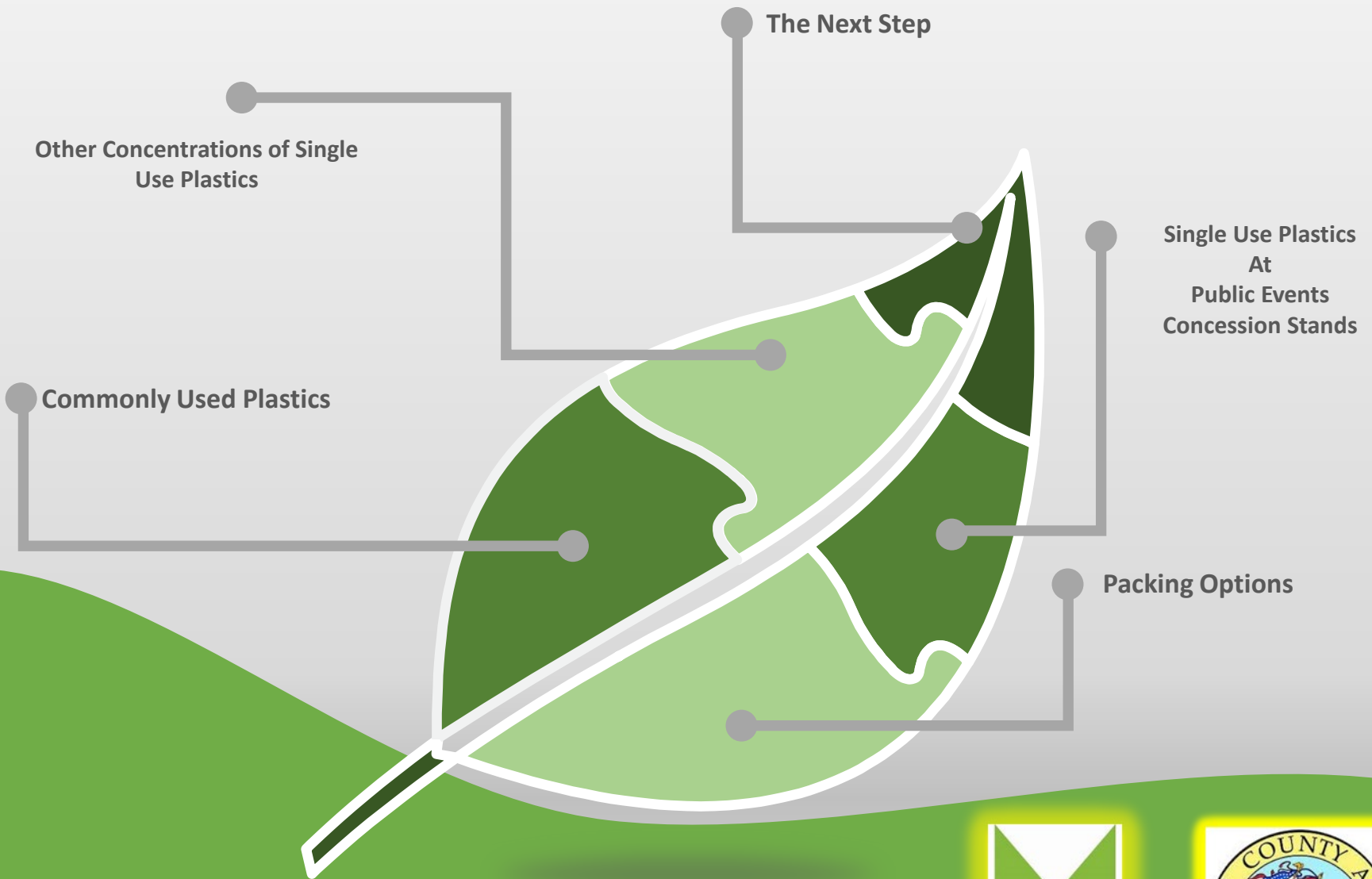




Recommendations

1. Implement purchasing policies and draft mail room procedures to use only paper or environmentally friendly/biodegradable packing materials.
2. Reuse boxes and repurpose them.
3. Use alternate environmentally friendly packing material.
4. Use paper bags.





What do we go from here based on what we have learned?



The Next Steps

1. Brief Leadership and Key Decision Makers.
2. Educate and Share Findings.
3. Implement and Fund Recommendations and Best Practices.
4. Advise and Facilitate the Drafting of “Green” Ordinances.
5. Establish a Strategic Green Team with City and County Participation.



Reduce

What Can be Done to Reduce and Minimize the Use of Single Use Plastics?

Understand

How and What Single Used Plastics are being Used by the City and County?

Educate

Change Personal Behaviors to Reduce Single Use Plastic Usage.

Implement

Draft Policy and Ordinances to Reduce the Use of Single Use Plastics. Establish a Strategic Green Team to Advise Leadership of Continuous Improvements regarding Environmentally Friendly Polices and Practices.

Fund

Monetarily Support of Initiatives and Best Practices that Emphasize Environmentally Friendly Products and Reduce Single Plastic Usage.

